

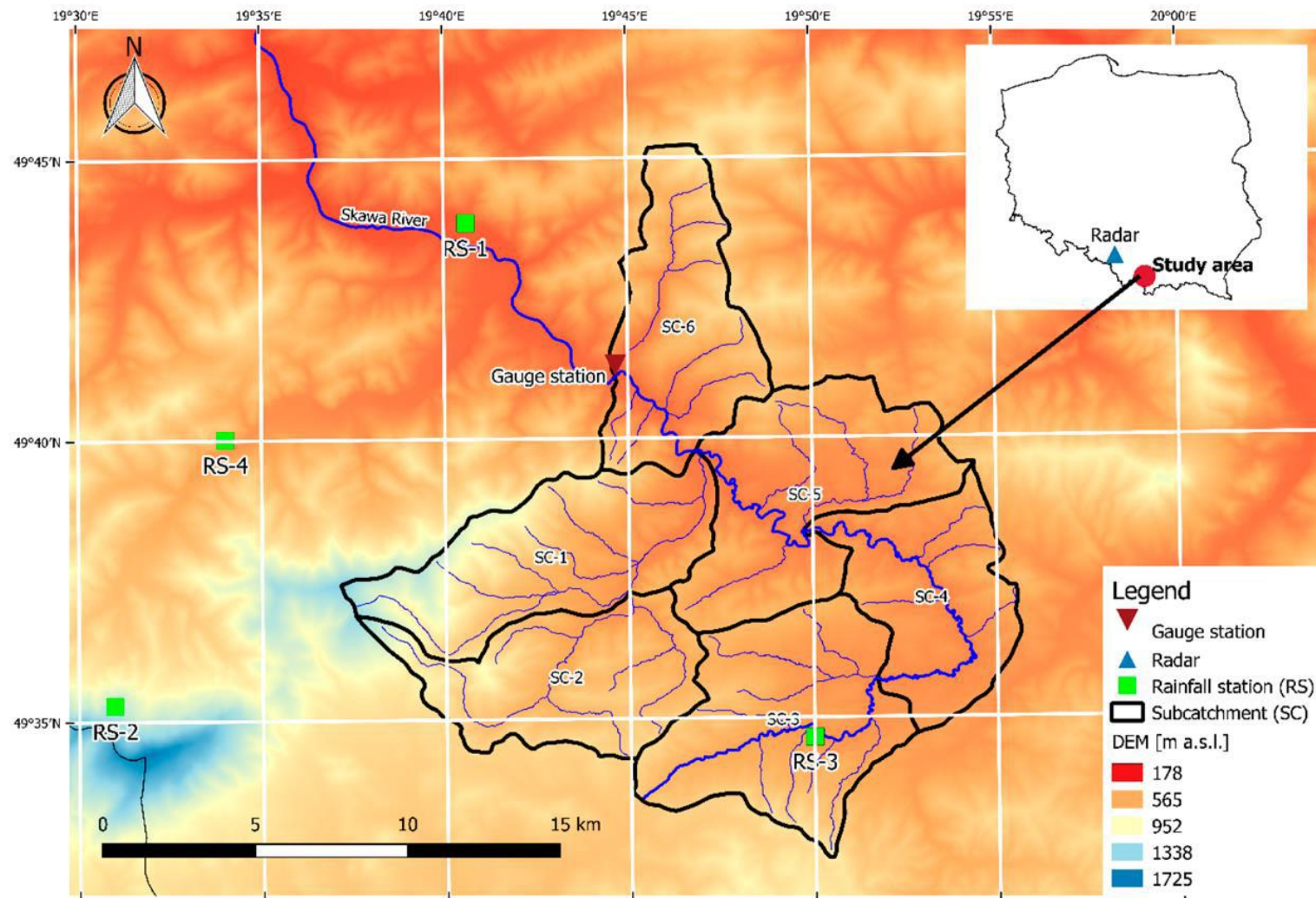


The Skawa catchment, Poland



Paweł Gilewski, PhD

Overview of the study area



19.02.2024

Introduction to the Skawa catchment

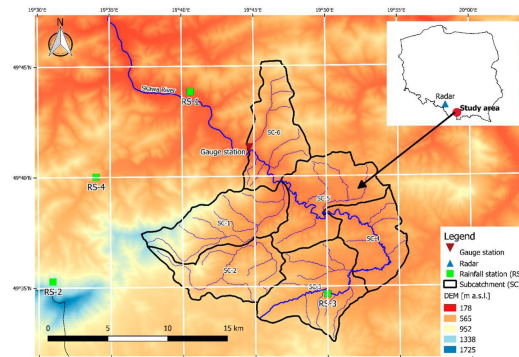
Key Facts



Historically, flash floods in this area were already noticed in the **XV century**.

The most recent flood events occurred in **2010**, **2014**, and **2019**, leading to substantial material losses in built-up parts of the catchment and significant changes to the topography in forested areas.

The **logs** transported in the streams have a considerable impact on the accumulation of sediment transport, increasing the risk of flooding.



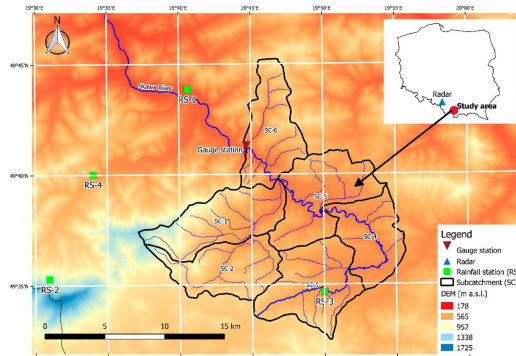
19.02.2024

Introduction to the Skawa catchment

Key Facts

Climate change impact will most likely result in even more frequent and intense precipitation events.

The **case study** of the **upper Skawa catchment**, due to its characteristics (relatively small area, mountainous character, quick response time, and a limited number of rain gauges), is representative of similar study areas in Slovakia and the Czech Republic, as well as other parts of Europe.



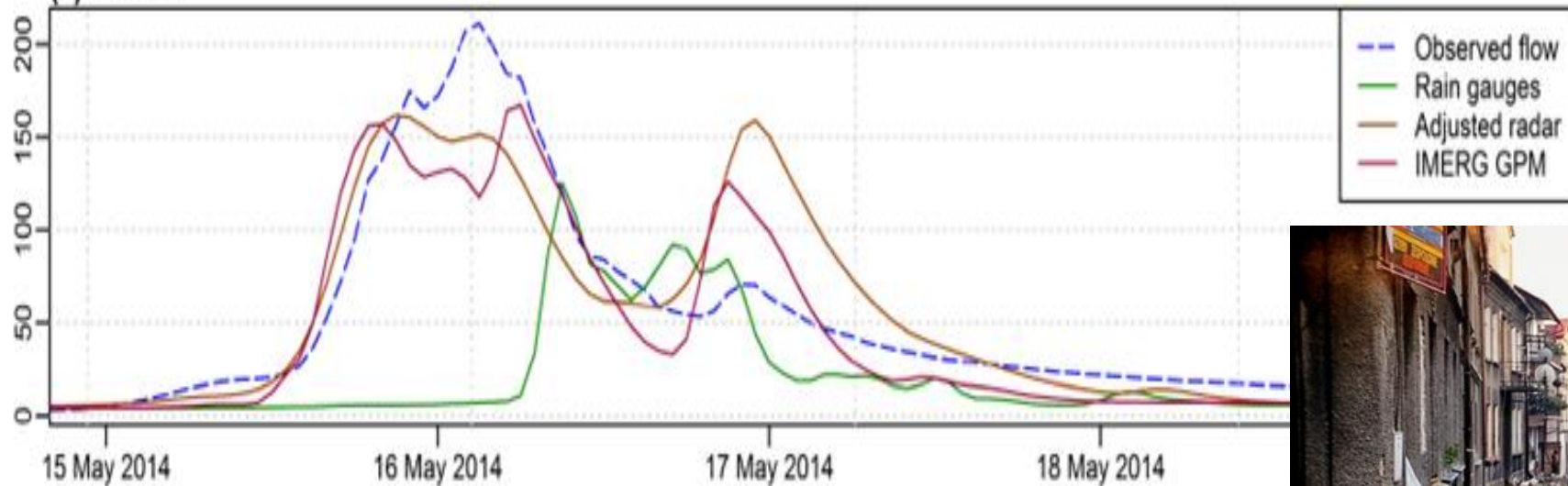
19.02.2024

Introduction to the Skawa catchment

Example of flood event – May 2014



(a) Event 1



19.02.2024

Introduction to the Skawa catchment

Overview of the tasks



1st week:

- Analysis of the impact of land cover changes over the past several years on the formation of runoff in the catchment. What effect will the restoration of the catchment have on its flow?

2nd week:

- Impact of the changes in precipitation patterns related to different climate change scenerios on the river discharge dynamics.

19.02.2024

Introduction to the Skawa catchment